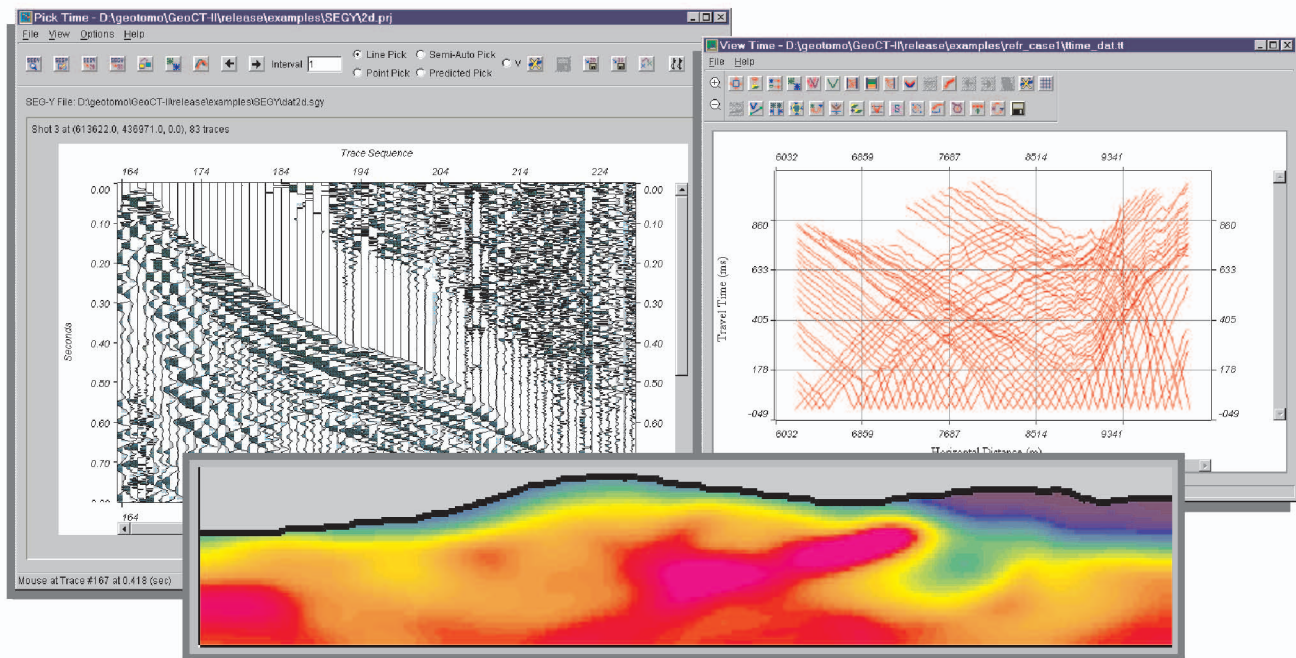


GeoCT-II™ Full-Featured Tomography Software for Geophysical Engineering Applications in Any Geometry

GeoCT-II is a 2D raytracing and tomography application for refraction, reflection, crosshole and VSP survey geometry. It is designed for geophysical engineering applications for high-resolution imaging. With a variety of features, GeoCT-II is able to help you understand data and image any complex velocity structures rapidly.



Geophysical Engineering Applications:

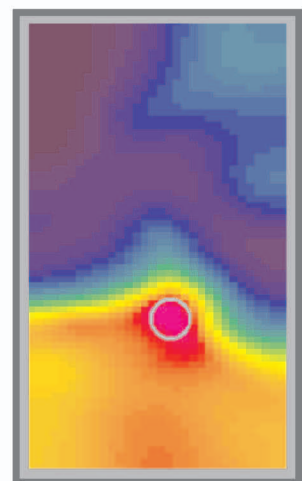
- Map two-dimensional bedrock topography, allowing velocity variations
- Image near-surface complex velocity structures, including reversed velocities
- Locate sink holes in the shallow Earth using refraction or crosshole survey
- Search buried sewer pipes or concrete objects using crosshole or VSP survey
- Identify near-surface fractures for risk assessment, and reduce engineering cost

Software Users:

Baker Hughes
 Fugro South, Inc.
 Geofitec, Republica Dominicana
 Geophysical Surveying Co., Japan
 Golder Associates Ltd.
 Kansas Geological Survey
 OYO Geospace
 Shengli Oil Field, China

Sichuan Shandi, China
 University of Athens, Greece
 University of Connecticut
 University of Patras, Greece
 University of Trieste, Italy
 URS Corporation
 U.S. Federal Highway Administration
 Wellfield Ltd., Chile

Crosshole Case History: Locate A Sewer Pipe



810 Highway 6 South, Suite 220, Houston, Texas 77079, USA
 Tel: 281-597-1429; Fax: 281-597-1201; www.geotomo.com