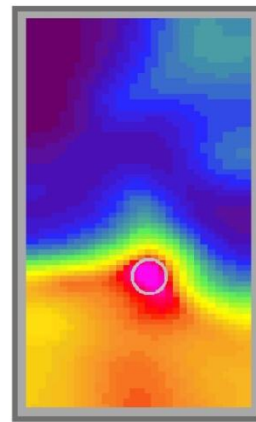
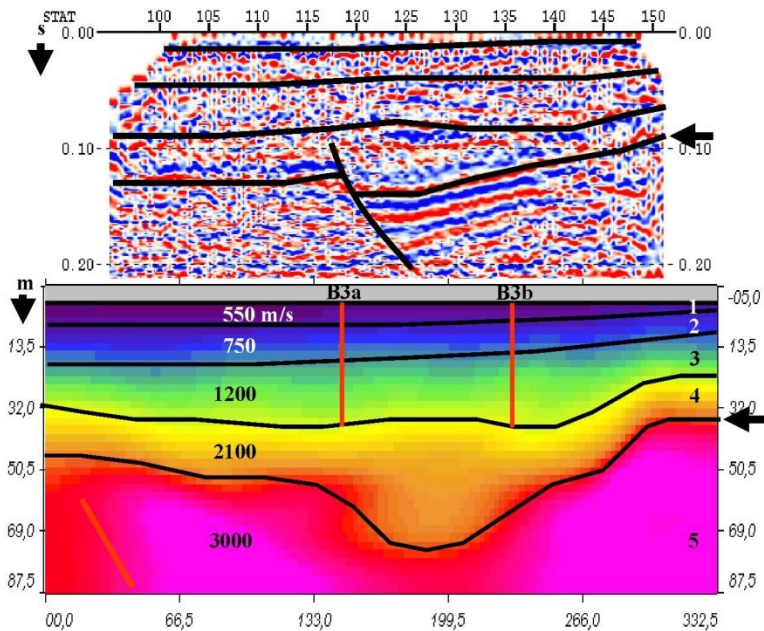


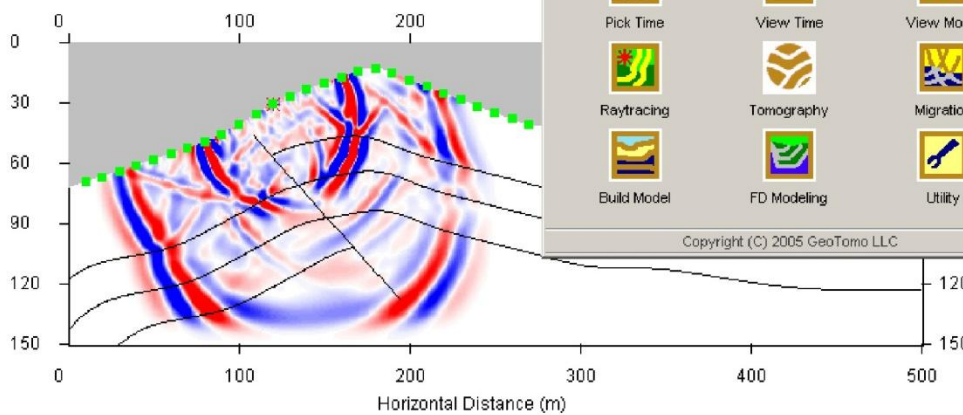
GeoCT-IITM Full-Featured Tomography Software for Geophysical Engineering Applications in Any Geometry

GeoCT-II is a 2D raytracing, finite-difference modeling, and tomographic imaging application for engineering survey geometry. With a variety of features, GeoCT-II is able to help you understand data and image any complex velocity structures rapidly.



Crosshole Case History: Locate A Sewer Pipe

Shallow refraction and reflection imaging



Geological model building, acoustic, elastic, and anisotropic finite-difference modeling